

ANS201/ANS201N Screw Mini Circuit Breaker



S201



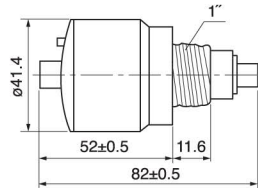
S201N

Application

The circuit breakers are suitable used in AC and DC 32A and below electric circuits of 50/60Hz, up to 380V and up to DC 250V respectively, for protection of electrical circuits and apparatus in office and residence buildings, and for protection of circuit terminals against overload and short circuit. The item is a durable protection that substitutes the traditional fuse element and can be used in each fuse socket with E27 thread according to DIN 40440.

Specifications

Pole Number	Single Pole	Single Pole
Rated Current (A)	2-25	32
Rated Voltage (V)	250/380	250/380
Breaking Capacity (A)	3000	3000
Power Factor for Testing Circuit (A)	0.65-0.70	0.75-0.80



Note: The connecting thread of the circuit breaker is "1"